



## Choosing or taking the best photo

Firstly, you need to choose a photo you would like to have sketched. This page should offer some guidance to help you pick the best possible option!

You can send me a selection of photos if you are unsure, and I can help you choose the one that will allow for the best portrait.

It's important to make sure you are 100% happy with the photo you have selected, because I sketch every detail from a reference point.

If there is a detail in the photo you **DON'T** want included (whether that is a cataract in your dog's eye, wet fur that you would rather looked dry, or perhaps the pupil of an eye needs to be smaller etc) you must let me know in advance!

Generally, I can alter any of these details if provided with additional photographs of a subject in advance - that way I can truly get to learn the features and character of the subject being sketched.

In this document, I will guide you on:

- Choosing or taking the best photograph
- Combining details from two photographs
  - Working from old or physical media
  - More than one photo



## How do I choose / take the best photograph?

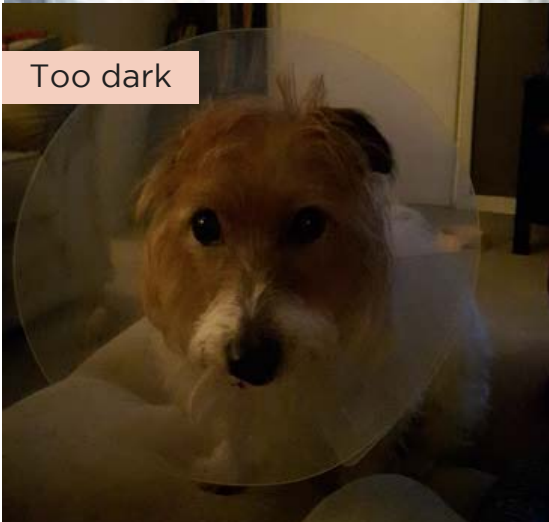
First and foremost, you must like the photograph you are having sketched! If you don't think it shows the best of your dog's character, it's best to change the picture. Choosing a photo can be a long process - but it's best to get this part perfect so you have a portrait you will truly love.

For the highest quality sketch, it is best to follow the criteria outlined below when choosing or taking your photograph:

### 1 - Lighting!

Lighting is incredibly important in black and white artwork, as shadows and highlights are what really brings the art to life.

Good lighting will also will increase the visibility of a subjects features - and the more I can see in a photo, the more detail I can put into a sketch.

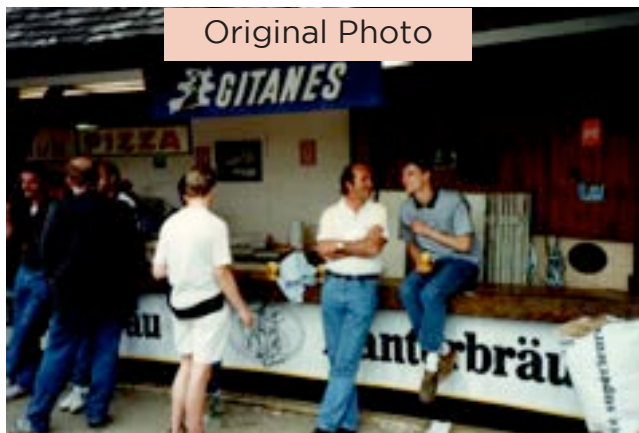




If you have the opportunity to take a new photo of your doggo, natural lighting is amazing for photography.

But don't worry if you are unable to take a new photograph.

Things like this can be altered using editing software, but for the maximum detail it is best to use the correct lighting conditions.



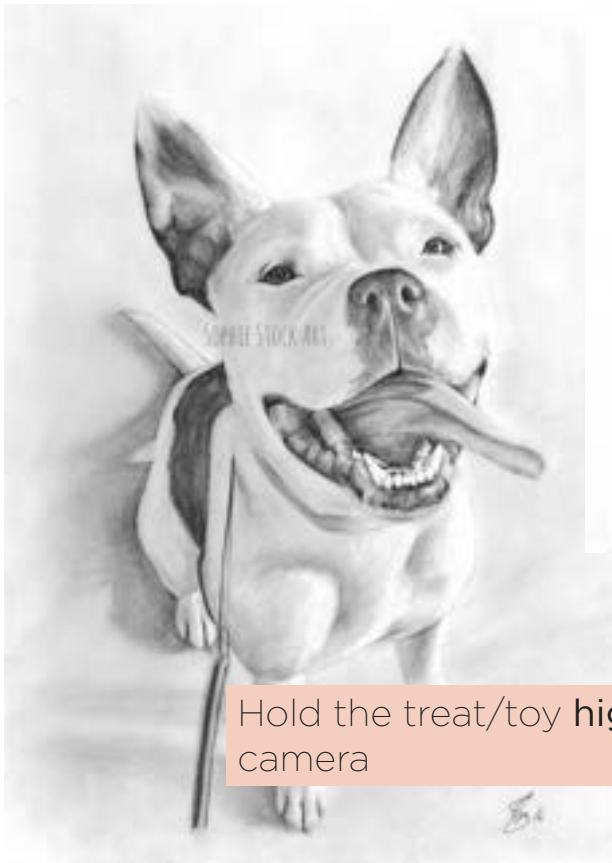


## 2 - Composition

Which way would you like your dog to be facing in the sketch?  
Do you want their mouth open or closed? Ears up or down?

Use your dog's favourite things to get their attention - this can be a favourite toy, food, a person, whatever they are most likely to give their gaze to.

You can use their favourite thing to direct their eyes in the desired direction:



Hold the treat/toy **high above** the camera



Hold the treat/toy **behind** the camera



Ask someone to hold the treat/toy in the direction you would like your dog to look



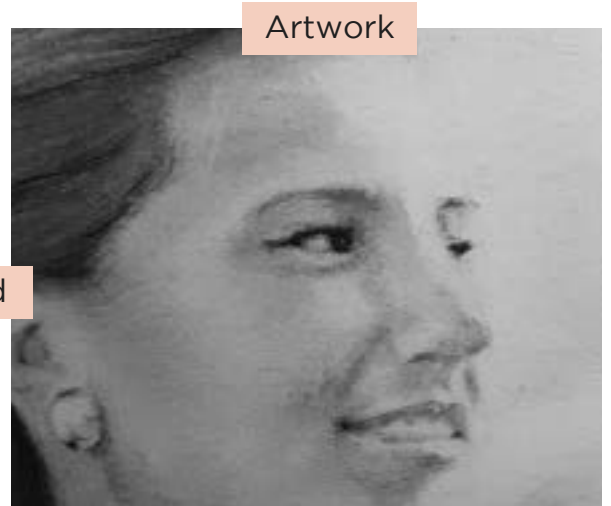
## 4 - Resolution

Resolution is the number of pixels your photograph contains.

You can check this in the 'properties' of your image.

A good resolution for an A4 sketch is 1536 x 1024.

Put simply, the further you can zoom in on your photograph without the image becoming pixelated, the more details I can include in your portrait.

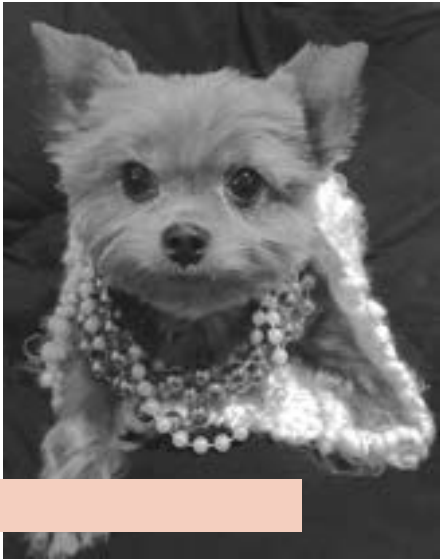




Artwork



Low Resolution Photo



Low Resolution Photo



Artwork



Artwork



High Resolution Photo



## Combining details from two photographs

Let's say you have a photo that you **LOVE** the composition of, but perhaps your pooch is all muddy in that photo, and you'd rather he looked fluffy and clean.

You can send me a photo(s) of him with his coat when he's not been knee deep in mud, and I can use that new image to alter his fur detailing in the initial photo.

In this example, the camera flash had caught Molly's eyes giving her a bright glare in her eyes. I sketched primarily from image 1, but used image 2 to alter her eyes.



Image 1



Image 2



Artwork



## Working from old photos and physical media

So you want a portrait doing of your childhood doggo, but you only have a couple of old photos in that dusty photo-album in the loft... No worries!

If you have a scanner, you can scan these images in (at 300 - 600 DPI) and email the files over to me that way.

Don't have a scanner? Not a problem!

You can post the physical photos over to me, and I can scan them in here.

Then I can ship the original photos back to you with the sketch once completed.







Old photos don't allow for the most details in a sketch, but that doesn't mean I can't sketch them!

They won't look as crisp as some of my work, but sometimes that doesn't matter.

I was asked to create this very special piece combining two grandparents into one sketch, from two separate photographs.

The recipient had no photos of the grandparents together, so to have this sketch created was something very special to them.





## More than one photograph, in one sketch

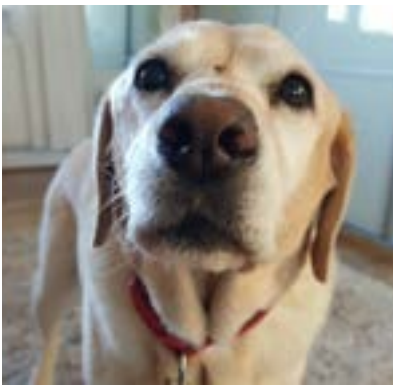
Do you want a sketch of your two crazy dogs, but you just can't get a nice photo of the two of them together?

That's not a problem!

I regularly combine two photos of separate subjects, into one sketch.

Here are a couple of examples:







These are optional criteria for the **BEST** possible outcome. If you are unable to get a better photograph, that's OK! We can work with it! I can combine details from two photographs and I can even work from old photographs.